

Project: _____

Fixture Type: _____

Location: _____

Contact: _____

P900014-009

Kitson

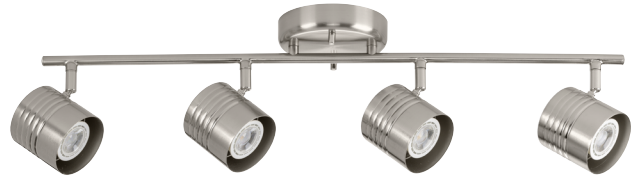
Incorporate a hint of stylish industrial light to any commercial or residential setting with this brushed nickel four-head track metal directional light fixture. Multi-directional lamp heads provide design flexibility and illuminate typically hard-to-reach areas such as highlighting images in a lobby or gallery. The directional frame is coated in a beautiful brushed nickel finish. Each lamp features an industrial styled-shade with an outer ribbed design and the capability to create different beam shapes as needed.

- Each lamp features an industrial styled-shade with an outer ribbed design and the capability to create different beam shapes as needed.
- The directional frame is coated in a beautiful brushed nickel finish.
- Multi-directional lamp heads provide design flexibility and illuminate typically hard-to-reach areas
- Ideal for any lobby, gallery, sitting room, hallway, or foyer.
- Perfect for transitional or modern settings.
- Measures 5-inch width by 6-7/16-inch height.
- Uses four GU10 base bulbs that are sold separately (50w max - LED or incandescent).
- Able to be fully dimmable with dimmable bulbs.
- Includes installation instructions and mounting hardware.
- Progress Lighting products are designed for exceptional quality, reliability, and functionality.

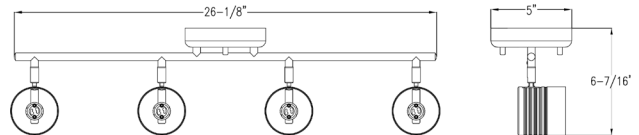
Category: Directionals

Finish: Brushed Nickel (Plated)

Construction: Steel Construction



Width: 5 in
Height: 6-7/16 in
Depth: 26-1/8 in



MOUNTING	ELECTRICAL	LAMPING	ADDITIONAL INFORMATION
Wall or Ceiling mounted	Prewired	Quantity: Four 50 W max. MR-16 (GU10, 120V) or LED equivalent	CCSAus Damp Location Listed
Canopy 5" W., 1.18" ht., 5" depth	6 inches of wire supplied 120 V	GU10 base sockets	1-year Limited Warranty